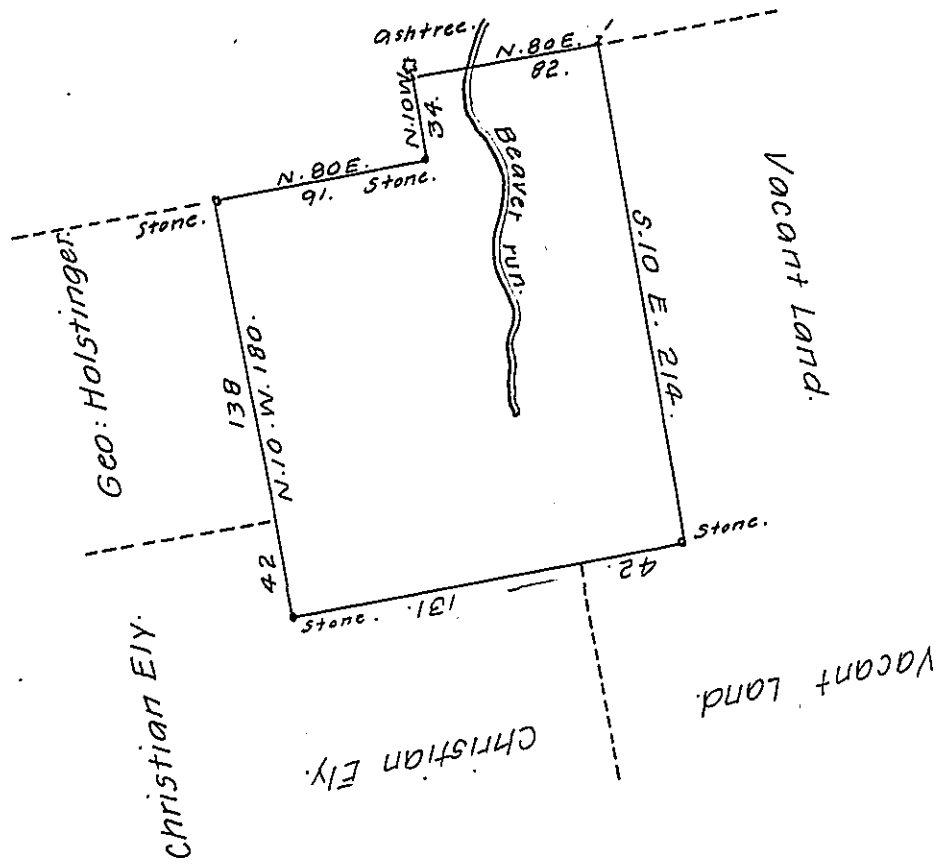


Phillip Phuhle



By Virtue of a Warrant from the Proprietaries dated the First day of August 1734 Surveyed the nineteenth day of June 1738 to George Faulk the above Described Tract of Land Situate on a Branch of Manahatawny Creek in the County of Philad^a Containing Two hundred acres with Allowance of Six $\text{\textcircled{P}}$ Ct.

Nich^s Scull.

IN TESTIMONY that the above is a copy of the original remaining on file in the Department of Internal Affairs of Pennsylvania, made conformably to an Act of Assembly approved the 16th day of February, 1833, I have hereunto set my Hand and caused the Seal of said Department to be affixed at Harrisburg, this sixth day of May, 1908.

Heery Houch
Secretary of Internal Affairs.